

Rock Star

Squire & Partners' Stone Tapestry is a centrepiece at the Surface Design Show



Photos
James Balston

Designed by Squire & Partners, the Stone Tapestry is the central feature in the Stone Gallery at the Surface Design Show 2020 (11-13 February at the Business Design Centre, London). The installation showcases eighteen stone types with diverse textures, colour and patterns.

Working in collaboration with natural stone supplier SolidNature, Italian furniture maker Lema SpA and lighting specialist Atrium, the architects' installation is intended to highlight innovative uses and applications of stone.



The featured selection ranges from marble, onyx and quartzite to slate and limestone, combined to create "a kaleidoscope of tones from off-whites, vibrant yellows and pastel pinks through to dramatic greens, reds, browns and blacks". Each sample is finished by SolidNature in seven different ways – polished, honed, sand-blasted, leathered, corrugated, ribbed and 'pillowed' – to demonstrate the beauty and versatility of natural stone.

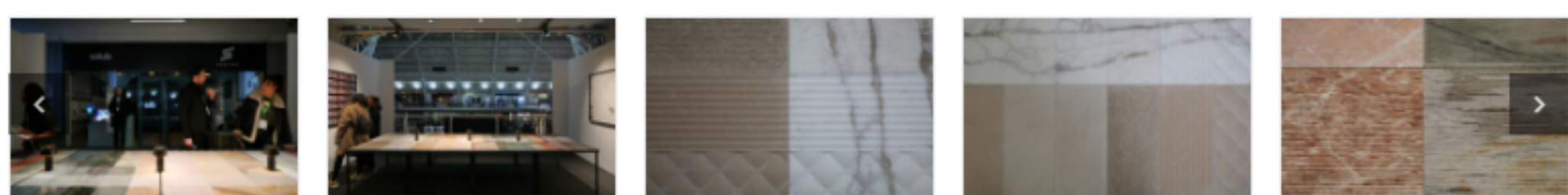
A large world map above the installation shows the provenance of the stones which come from quarries in China, Brazil, Turkey, Sweden, Spain, Italy, Iran and India. Three stones from the UK are included – Portland Stone by Albion Stone, Broughton Moor by Burlington Stone and Caithness Flagstone by Marshalls.



Sustainability within the industry was addressed with a third of SolidNature's samples being created from off-cuts, and photographic postcards detailing information on each stone type replacing bulky stone samples.

Squire & Partners created the installation at the invitation of the Stone Federation of Great Britain, and it is intended that the work should travel to Milane Salone in April 2020, before returning to Surface Design Show and the Natural Stone Show in 2021.

Additional Images



Share this page



Explore more

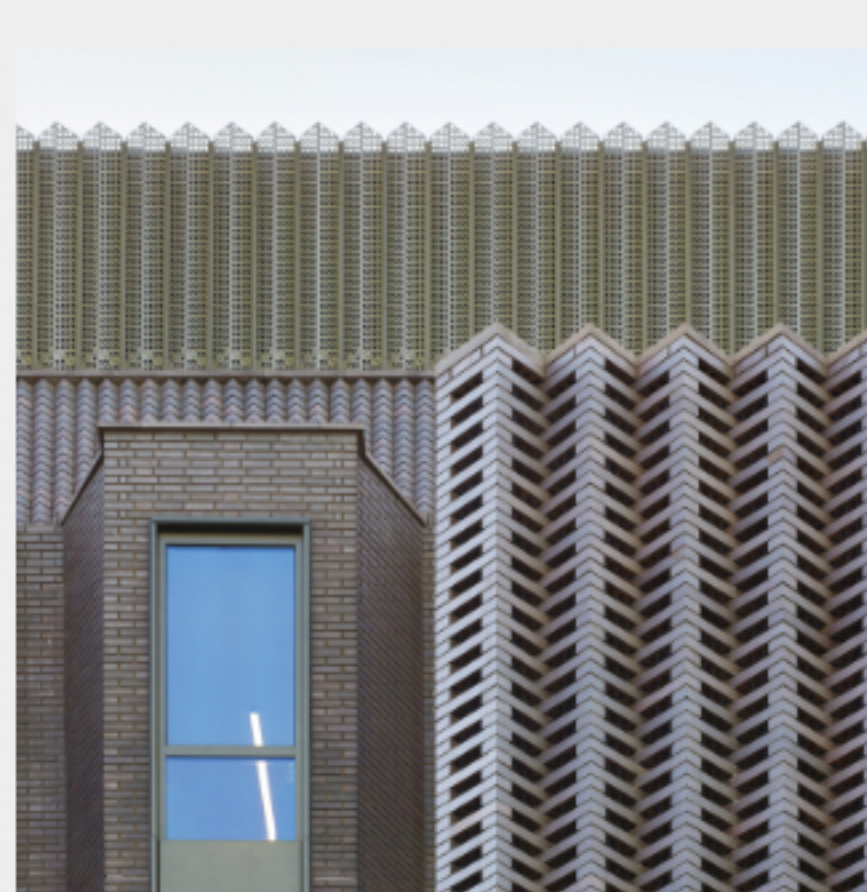
Editors Choice | Works | Installation | Stone

Related Posts



Explore more

Envelope: new buildings in brick



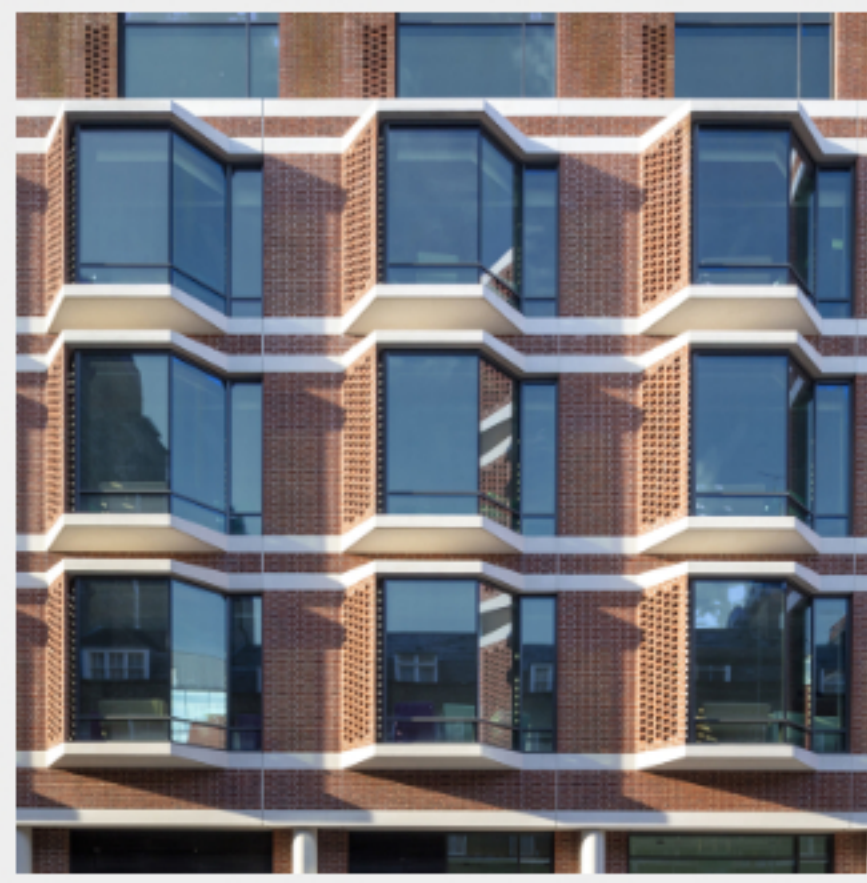
de Metz Forbes Knight adds a CLT and lattice brickwork extension to a London office building



An expressive masonry facade articulates a residential development in Lincoln by Jonathan Hendry Architects



A refurbished commercial building by Matt Architecture employs glazed ceramic tiles and sawtooth brickwork



Bay Display: prefabricated bay windows articulate a specialist ear, nose, throat and dental facility for University College London Hospitals by Pilbrow & Partners

Architecture Today January 2020



VIEW THE DIGITAL EDITION

Specification Today November 2019



VIEW THE DIGITAL EDITION